

DOUBLE ROW TERMINAL BLOCKS

DOUBLE ROW TERMINAL BLOCKS come in three basic options dependent on base material and style:

- **CLOSED BACK, THERMOPLASTIC** - the ideal option for standard configurations. Generally, these are the most cost effective and are more robust than any other style.
- **CLOSED BACK, PHENOLIC** - this is the second best option for standard configurations where temperature ratings are between 125° C and 150° C.
- **OPEN BACK, PHENOLIC** - should be used only for feed-thru hardware options, and requires an additional insulator strip in order to attain the noted voltage rating.

ELECTRICAL:

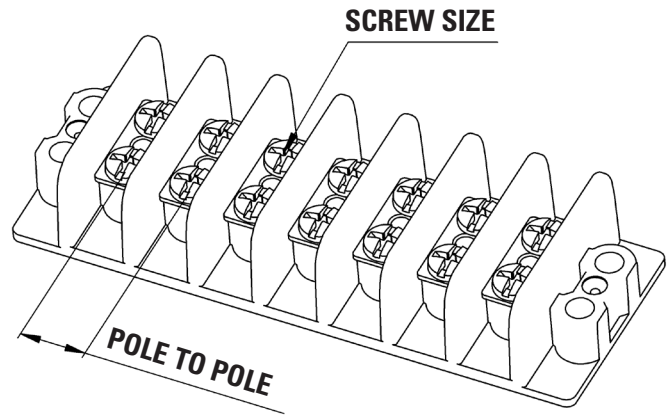
Amps & volts - see table

STANDARDS:

UL recognized file no. XCFR2.E62806 or E47811
 CSA certified file no. LR19766 (CSA C22-2 No. 158)
 CE (Component IEC 60947-7-1)
 RoHS compliant (All)

WEBSITE RESOURCES:

Dimensional drawings & 3D CAD files
 Termination and mounting specifications
 Detailed product/series data sheets
 Hardware options per series

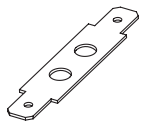


SERIES	AMPS	VOLTAGE CLASS B/C	BARE WIRE RANGE	MAX LUG WIDTH	SCREW SIZE	INCHES L TO L	POLES (xx)	WIDTH (INCHES)	HEIGHT (INCHES)	BASE MATERIAL	STYLE
670A RZ	20	300/150	#12-22	0.31	#6-32	0.375	1-30	0.87	0.48	Thermoplastic	Closed Back
621 RZ	30	600/600	#12-22	0.33	#6-32	0.437	1-30	1.38	0.75	Thermoplastic	Closed Back
671 RZ	30	300/150	#14-22	0.33	#6-32	0.437	1-30	1.13	0.53	Thermoplastic	Closed Back
672 RZ	30	600/600	#12-14	0.41	#8-32	0.562	1-24	1.31	0.71	Thermoplastic	Closed Back
670A GP (100)	20	250/NA	#12-22	0.30	#6-32	0.375	1-36	0.88	0.44	Phenolic	Closed Back
671 GP (200)	30	300/150	#14-22	0.34	#6-32	0.437	1-30	1.12	0.53	Phenolic	Closed Back
672 GP (300)	30	NA/600	#10-14	0.42	#8-32	0.562	1-24	1.31	0.71	Phenolic	Closed Back
400	30	NA/600	#10-22	0.47	#10-32	0.687	1-12	1.81	0.75	Phenolic	Closed Back
410	5	300/NA	#18-20	0.19	#2-56	0.25	1-23	0.63	0.32	Phenolic	Open Back
600	15	300/300	#14-22	0.30	#5-40	0.375	1-22	0.87	0.41	Phenolic	Open Back
600A	15	300/300	#12-22	0.30	#6-32	0.375	1-22	0.87	0.41	Phenolic	Open Back
601	20	300/300	#12-22	0.34	#6-32	0.437	1-23	1.13	0.50	Phenolic	Open Back
801	20	NA/150	#10	RIVET	#6-32	0.437	1-23	1.13	0.50	Phenolic	Open Back
602	30	300/300	#10-18	0.44	#8-32	0.562	1-26	1.32	0.64	Phenolic	Open Back
802	30	NA/150	#10	RIVET	#8-32	0.562	1-26	1.32	0.64	Phenolic	Open Back
603	50	600/600	#10-16	0.47	#10-32	0.687	1-12	1.81	0.75	Phenolic	Open Back
604	70	600/600	#10-14	0.58	#12-32	0.875	1-8	2.00	0.94	Phenolic	Open Back
605	90	600/600	#10-14	0.67	1/4-28	1.125	1-6	2.48	1.13	Phenolic	Open Back

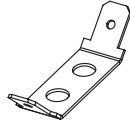
DOUBLE ROW ACCESSORIES

DOUBLE ROW HARDWARE GENERAL OPTIONS - see on-line product page for details and compatibility with each terminal block series.

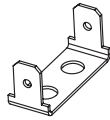
QUICK CONNECT (KT) OPTIONS:



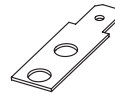
(2) 0° tabs



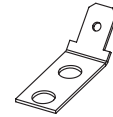
(2) 45° tabs



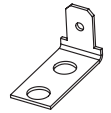
(2) 90° tabs



(1) 0° tab

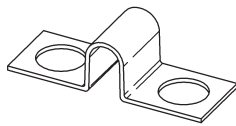


(1) 45° tab

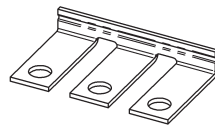


(1) 90° tab

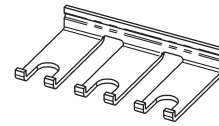
JUMPERS:



Pole to Pole



RJ



RJS

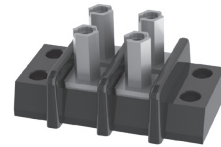
SCREW & STUD OPTIONS:



Standard or "PSB"

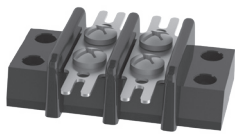


"SEMS" or "SP"



Stud Options

SOLDER COMPONENTS - FEED-THRU AND OVER THE SIDE:



"ST"



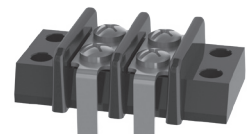
"3/4 ST"



"Y"



"YSY"



"Z"

COVERS & MARKING STRIPS:

